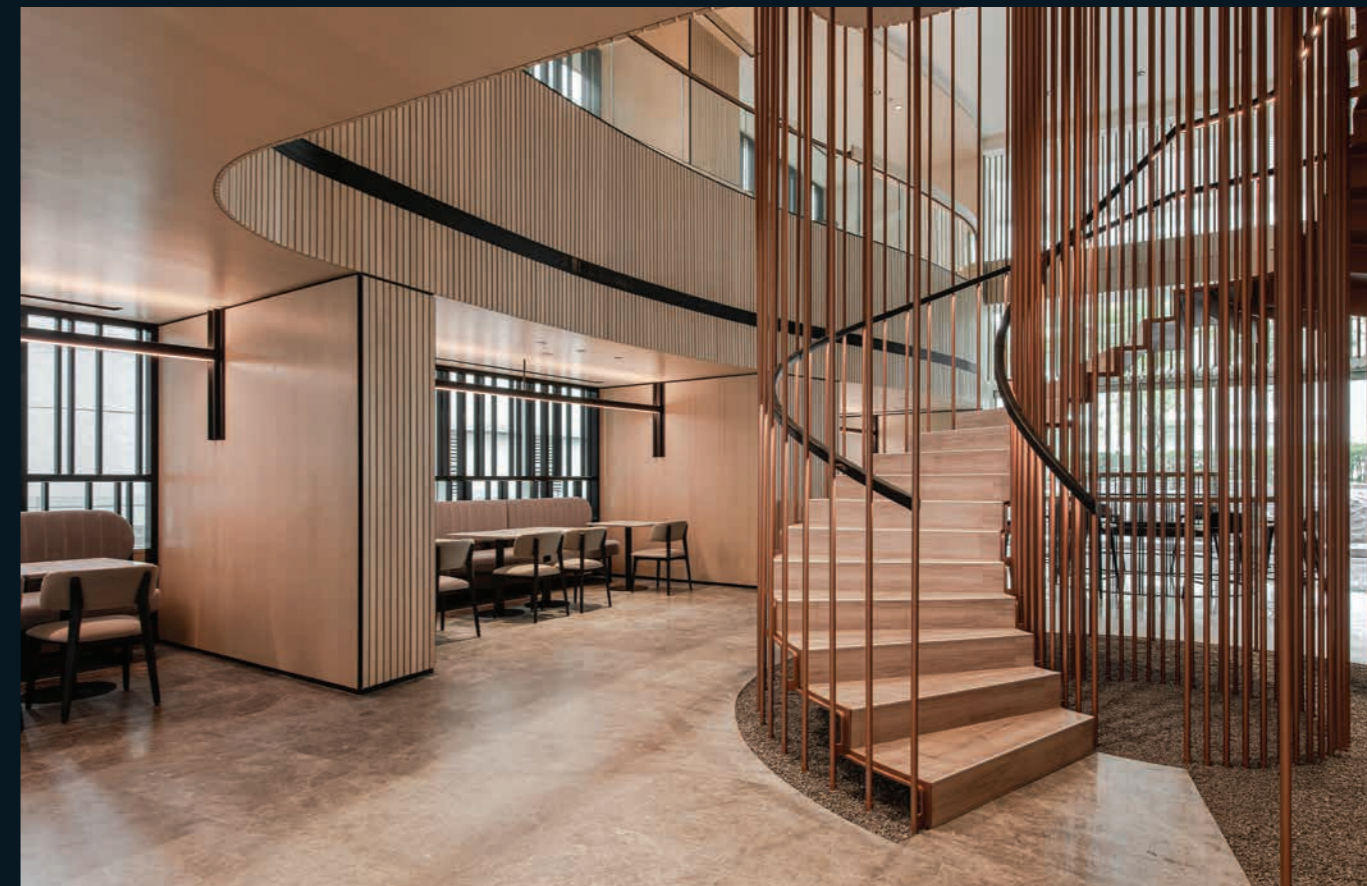




Vertically cavernous lobby



The use of timber for warmth

YTL HEADQUARTERS

Previously occupying offices in different locations, the company aims to bring together the entire suite of departments (comprising 1,000 staff members) and provide them with space to work under one roof.

MARBLE CLADDING WITH BRONZE ACCENTS

The vertically cavernous lobby spans more than 25 metres high, so the design challenge was to capitalise on the majestic quality of the space without dwarfing the human scale. As such, the lobby became a study in proportion, light control and a disciplined use of materials.

The marble cladding brings brightness into the space by reflecting the sunlight in the daytime. The composition of the marble-clad walls is denser at the bottom and lighter towards the top to give the impression of ascending lightness. Bronze horizontal striations and ridges break this continuous ascension with striking visual interests. A glittering metal art installation hangs in the void, over a series of benches and

niches that provide a sense of human scale in the soaring space. From the entrance to the lift lobby, there is a consistent use of bronze metal decorative elements, with the luminous frame at the lift corridor being the most eye-catching.

Levels eight to 10 comprise a café, multiple types of open and closed meeting spaces, and a function room. These are conceptualised to be the point of interface between staff, external visitors and consultants. The connectivity between levels is introduced as spiral, dynamic cage-like stairs with vertical rods made of powder-coated bronze, sitting on a bed of black gravel.

GRANITE COUNTERTOP

Conceived to be an extension of the lobby area, the café features a countertop with rough-edged split-face granite on the vertical surface, and a polished granite on the horizontal surface. Considering the large number of people served daily, the café needs a durable, heavy-duty countertop with a low



Cafe area

likelihood of needing to be repaired or resurfaced. Granite was chosen because of its resistance to scratches, wear and tear, and stains, as well as its ability to take heat without being damaged or weakened.

OAK TIMBER FOR WARMTH

On all levels, there are various meeting rooms to suit a variety of small to large gatherings. The walls and ceilings in these spaces use oak timber. The stained vertical stripes and various grain markings give an aged look that exudes warmth amidst the dominant use of stone and metal. The café and common areas also use oak timber for ceilings and walls, combined with soft fabrics for banquette and seating upholstery to serve as a balance to the hard marble flooring and tables. 📍



Street view

PROJECT DATA

- Project Name**
YTL Headquarters
- Location**
205 Jalan Bukit Bintang, Kuala Lumpur, Malaysia
- Completion Date**
November 2020
- Site Area**
2,600 square metres
- Gross Floor Area**
3,045 square metres
- Building Height**
42 storeys; 179 metres
- Owner**
YTL Corporation Berhad
- Conceptual Design Consultant**
Kohn Pedersen Fox Associates
- Executive Architect**
VERITAS Design Group (BCI Asia Awards 2020 Top 10 Architect)
- Principal Lead Architect**
David Mizan Hashim
- Interior Design Firm**
Ministry of Design
- Lead & Project Designers**
Colin Seah; Joyce Low; Ruth Chong; Kevin Leong; Damien Saive; Namrata Mehta; Fai Suvisith; Justin Lu; Zhang Hang; Maggie Lek; Kaye Mojica; Richard Herman; Rais Rahman; Tasminah Ali; Azilawanti Wati
- Civil & Structural Engineer**
YTL Design Group
- MEP Engineer**
YTL Design Group
- Quantity Surveyor**
Syarikat Pembinaan Yeoh Tiong Lay Sdn Bhd
- Interior Fit-Out Contractor**
Quantum One Sdn Bhd
- Images**
David Yeow Photography



Meeting room



Flexible workspace