



Typical heritage shophouse's facade 46



The all-white interior that resembles a canvas

CANVAS HOUSE

The heritage shophouse has been repurposed into a co-living facility, aiming to offer long-term stays (three months to a year) for expats. With a minimal budget and a tight timeline, alongside the desire to create a future-looking homestay, the designers decided to paint the entire house white. The idea was that this would be a canvas for the furniture pieces and decorative elements.

UPCYCLING MATERIALS

Repurposing became an integral part of the interior furnishing—so tables, chairs, chests, mirrors, screens and vanity desks were all given a new lease of life through upcycling. To pay homage to the past, yet to give them a modern character at the same time, the designer painted these pieces all white and accentuated the decorative parts.

An artist specialising in upcycling made the series of lights in the atria. The three sets of light were made from cling film, which was layered, ironed and heated to create a waterproof, leathery material that has the same tone as the

room's vintage impression.

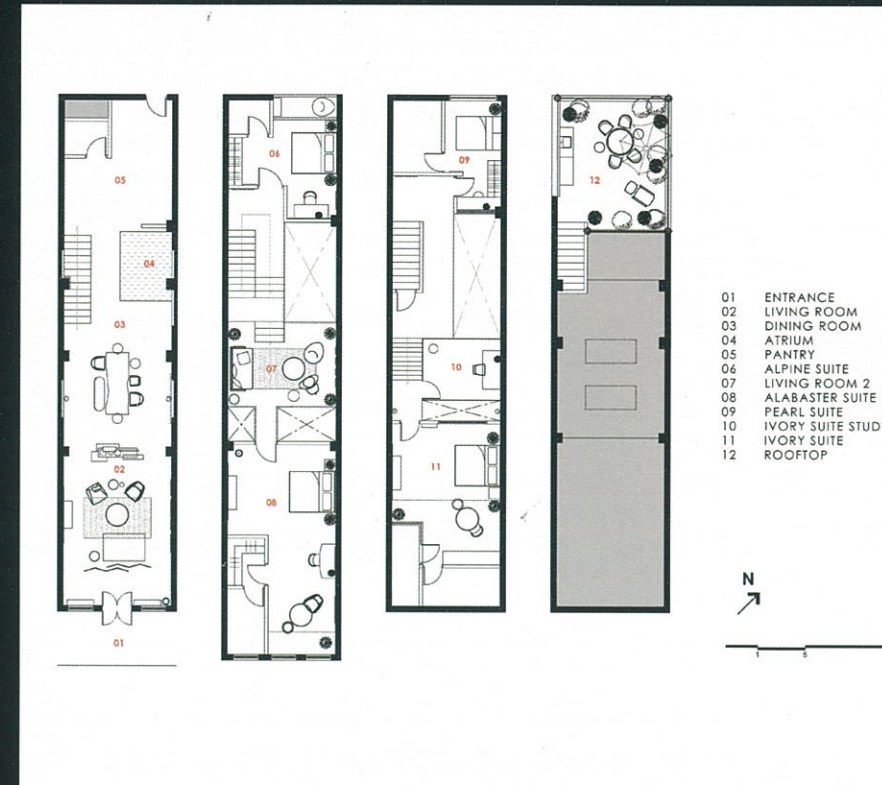
CONNECTING THE PAST AND THE PRESENT

When it comes to adaptive reuse projects, according to the designer, the big task is to tread the line between the past and the present. The pitfall is when one gets fixated to the old time, because the design will not progress to accommodate the current needs. However, disregarding history by creating something totally foreign or novel will contradict the essence of adaptive reuse itself. The key is to layer over the existing story with a new one, blurring the inherent boundaries between past and present, object and space.

Exposed brick walls have been retained, as well as the use of old timber, including the one for the staircase. Historic details are preserved in a similarly conceptual fashion, including the sundial. The builders marked out the outline of the afternoon-sun shadow and painted around this outline, a quirky detail to literally mark time on the ground. ©



Upcycled furniture pieces



Floor plans

PROJECT DATA

Project Name
Canvas House

Location
28 Blair Road, Singapore

Completion Date
January 2020

Gross Floor Area
350 square metres

Building Height
4 storeys

Developer
Figment

Interior Design Firm
Ministry of Design (MOD)

Principal Designers
Colin Seah; Kornpetch Chotipatoomwan; Yupadee Suvisith; Justin Lu; Zhang Hang

Interior Arts
Reimage

Electrical Engineering
Logic Engineering

Interior Fit-Out Contractor
Forte Resources

Painting
Ong Nga Renovation

Images
Edward Hendricks (CI&A Photography)



The original timber staircase



The wide opening at the facade allows for maximum natural lighting