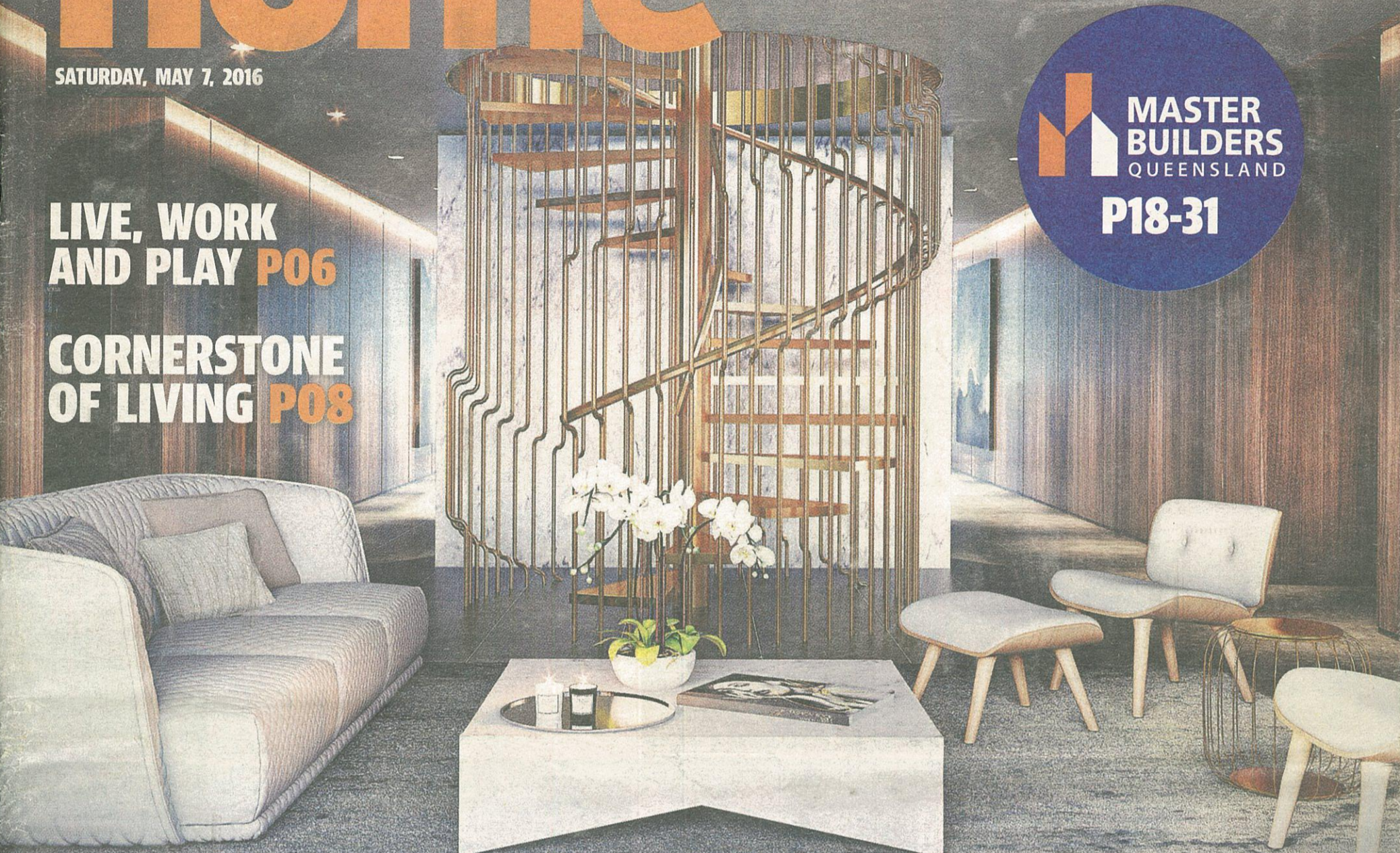


The Courier Mail
home

SATURDAY, MAY 7, 2016

**LIVE, WORK
AND PLAY P06**

**CORNERSTONE
OF LIVING P08**



OPULENT
lifestyle

APARTMENTS INSPIRED
BY LUXURY MANSIONS **P14**

Move in today...
HAVE IT ALL!

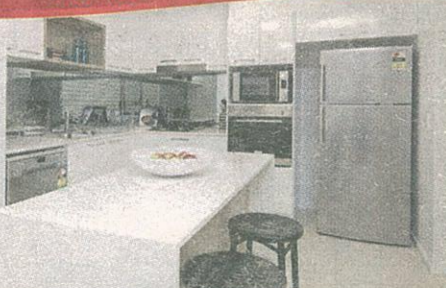


BOULEVARD
NORTH LAKES

**LARGE DESIGNER
LIFESTYLE APARTMENTS \$365,000**
2 Bed + 2 Bath + Car from

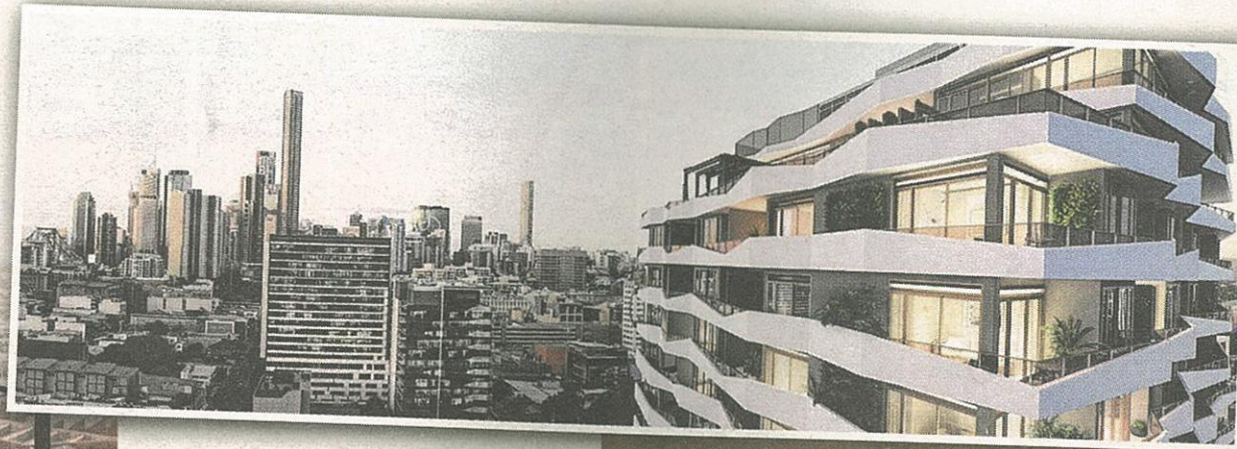
- Absolute resort style living & ground floor retail & cafes
- Easy walking distance to everything within the North Lakes Central Village precinct
- Luxurious & spacious these 2 bedroom apartments will impress owner occupiers
- Quick access to the motorway means only 20 minutes from beaches and Brisbane airports
- Located just 300 metres from Westfield Shopping Centre, Cinemas & Restaurants
- North Lakes is one of Qld's fastest growing suburbs. Visit today and see why it's so popular

**JUST COMPLETED
HURRY SELLING FAST!**





ULTIMATE LUXURY: Kokoda Property's \$120 million Chester & Ella in Newstead will have 170 apartments including 11 penthouses, a lobby (top) with concierge and a three-level residential amenity including a private dining room seating up to 20 people (far right).



STYLISH ARRIVAL: Kokoda Property managing director Mark Stevens, general manager Michelle Ettia and sales and marketing director Sam Tucker at the Chester & Ella launch last week.

BLAZING A HIGHER LEVEL IN LUXURY

Kokoda Property has its high-end sights set on Brisbane, writes **Jane Pinder**

A MELBOURNE development company renowned for the ultimate in luxury homes has brought the best of high-end detail to its first Brisbane project.

Kokoda Property has launched the \$120 million Chester & Ella in Newstead, which has 170 apartments including 11 penthouses priced from \$1.78 million.

At the recent project launch the top-level penthouse, with four bedrooms, three car spaces and private pool, sold for \$3.5 million.

Sales and marketing director Sam Tucker said as a luxury

developer with the heritage of delivering \$10 million homes, their strategy to bring those sophisticated elements to high-density developments had seen huge success, with the company's first Brisbane project to follow the same ideals.

The 18-storey Chester & Ella, with a proposed ground-floor restaurant, has been designed by Hayball in collaboration with Ministry of Design Singapore.

The level of luxury for the penthouses starts from the lobby with dark wood timbers and marble, with the priority lift opening on to arrival spaces

with floor-to-ceiling smoked mirror wall panelling and marble floors.

Inside the three and four-bedroom penthouses, which range from 158sq m to 430sq m, are features such as herringbone oak timber floors and floating marble benchtops, cut-pile wool carpet, freestanding ensuite bath and optional feature fireplace.

But Mr Tucker said the residential amenity was also the type of offering "that you could get in the biggest mansions in Hamilton or Ascot".

The three levels of residential amenity include

gym, chef-style kitchen with private dining for up to 20 people, and golden spiral staircase that leads to a private theatre, karaoke, billiards room and private bar. An outdoor communal space has pool, barbecue facilities, fire pit and a feature concrete table.

Residents will be able to book spaces for private functions through the seven-day concierge service.

Mr Tucker said Kokoda was now looking to expand in the Brisbane market, setting up a permanent office opposite Gasworks and interested in two other sites.

"I'd been looking all up and down the eastern seaboard and we'd heard some good success stories in terms of the Brisbane market and the demand and growth there," he said.

"So we came up and had a look around, and I was really impressed by how far Brisbane had come in terms of development, and even the culture.

"There are a lot of Melbourne-esque elements, I would describe them, coming to Brisbane, particularly in the Newstead area with James Street and Gasworks and the Emporium precinct. I am just so in love with it, and thought this is where we have to be."

