

BEAUTIFUL INTERIORS • INSPIRED LIVING

# HOME

OCTOBER 2015

JOURNAL | 美好家居



35<sup>th</sup>

*Anniversary*

## CLASSIC HITS

Celebrating iconic design and timeless style

頌揚經典設計與永恆風格



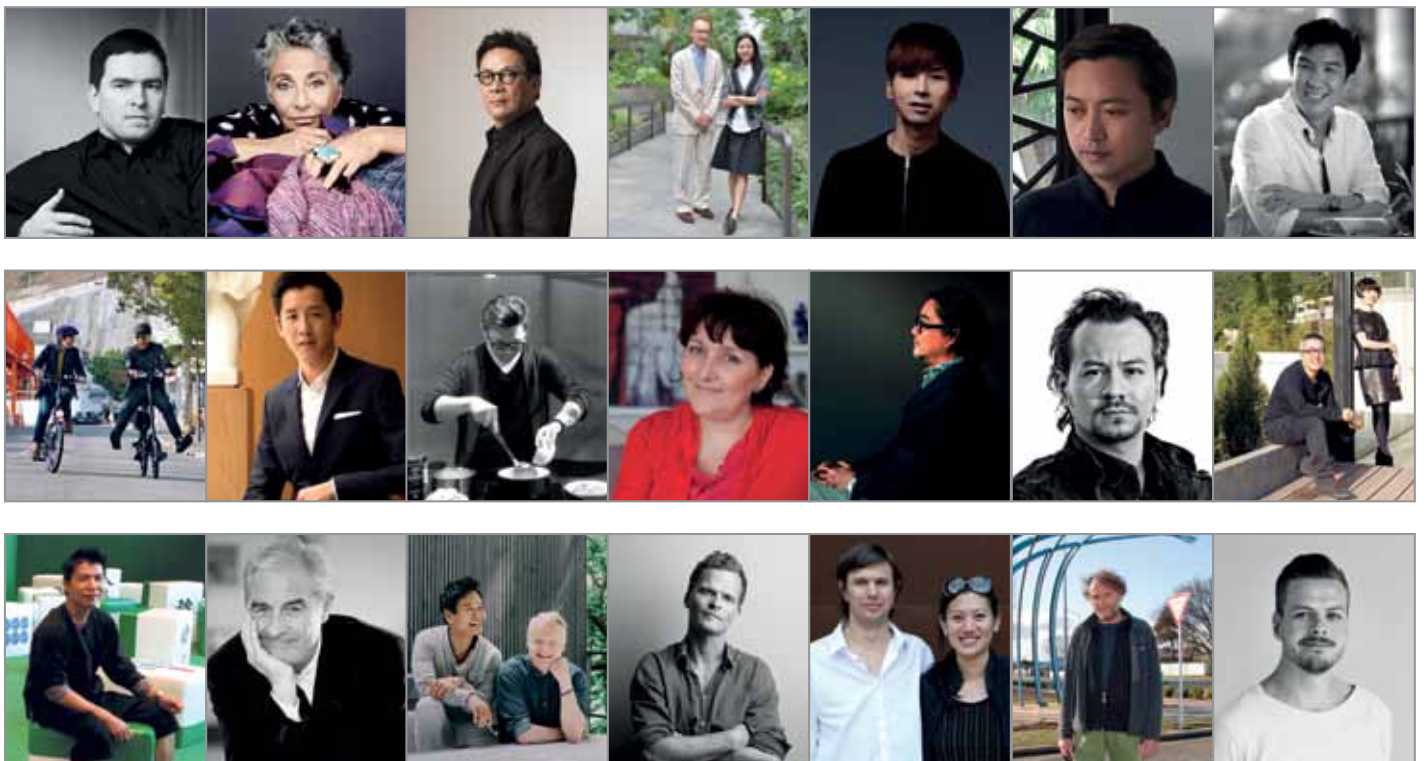
# FORWARD THINKING

35 renowned designers share their visions of the future home | 我們請來35位著名設計師分享對未來家居的看法

BY **ASIH JENIE, BEVERLY CHENG AND MARIA CHIARA ANTONINI** ADDITIONAL WORDS BY **KISSA CASTAÑEDA AND LEANNE MIRANDILLA**

Predicting the future is close to impossible without referencing the past. And as we reflect upon the past 35 years at *Home Journal*, we can't help but imagine how design will shape the upcoming decades with the advent of swift, technological progress, soaring land prices and the growing momentum of sustainable design. To gain insight, we've turned to 35 international and Hong Kong design forces to share what the future may bring and how it'll impact our interiors - and most importantly - the way we live.

不回首過去，又怎能預視將來？我們回顧美好家居過去35年點滴，同時不禁想像設計將怎樣為未來開闢道路，想想那些轉變、科技發展、昂貴地價和愈見普遍的可持續設計。今次我們誠意邀請35位國際及香港本地設計大師，分享未來可見之路，以及它對我們的室內裝潢和生活方式將造成怎樣影響。





“WE HOPE THAT THE IDEA OF HOME AS AN OBJECT OR A PLACE TO SHOW OFF WILL BE REPLACED WITH A HOME THAT INCLUDES A SENSE OF COMMUNITY – A HOME THAT IS MORE INCLUSIVE AS OPPOSED TO BEING EXCLUSIVE.”

LYNDON NERI & ROSSANA HU

FOUNDERS, NERI&HU DESIGN AND RESEARCH OFFICE  
CHINA | [neriandhu.com](http://neriandhu.com)



Bai Family for Parachina; photos courtesy of Neri & Hu

Era Lounge chair, photos courtesy of Normann Copenhagen



“BROADLY SPEAKING, I THINK THAT WE SHOULD ALL KEEP QUESTIONING THE STATUS QUO, OURSELVES AND THE THINGS WE DO. TO ME, THAT’S ESSENTIAL IN ORDER TO IMPROVE THE WAY WE LIVE – AND THE ONLY WAY WE CAN CONTINUE TO MOVE FORWARD IN THE WORLD.”



POUL MADSEN

CO-FOUNDER AND CEO, NORMANN COPENHAGEN  
DENMARK | [normann-copenhagen.com](http://normann-copenhagen.com)



JONAS BJERRE-POULSEN

CO-FOUNDER, NORM.ARCHITECTS  
DENMARK | [normcph.com](http://normcph.com)

“I THINK THAT THE TECHNICAL PART OF THE HOME SUCH AS ENERGY, WATER CLEANING AND THE LIKE WILL CHANGE DRAMATICALLY OVER THE NEXT DECADES – WHICH IS NOT ONLY NICE, BUT A NECESSITY.”



Ref-stool, photos courtesy of Norm Architects

Kieffer by Rubelli collection, 2015/2016 courtesy of Rubelli; portrait by Giovanni Gastel



“SIMPLICITY IS TO ME A WORD FULL OF INSPIRATION, A POWERFUL PUSH TO CREATIVITY. I HAVE ALWAYS ENCOURAGED SIMPLICITY AS A VERY SPECIAL FORM OF BEAUTY. THIS IS A SIMPLE MESSAGE THAT I WOULD LOVE TO CARRY TO THE FUTURE.”



PAOLA NAVONE

DESIGNER  
ITALY | [paolanavone.it](http://paolanavone.it)



PATRIZIA MOROSO

CREATIVE DIRECTOR, MOROSO  
ITALY | [moroso.it](http://moroso.it)

“SPACE WILL BE THE ULTIMATE LUXURY. BUT IT WILL NOT BE NECESSARY TO HAVE A LARGE SPACE TO LIVE WELL. LIVING WELL WOULD MEAN HAVING PEACE OF MIND, ACCESS TO NATURE – BLUE SKY, GREEN SCENERY, FRESH AIR AND WATER – AND GOOD FOOD. AND A GREAT MEANS FOR COMMUNICATING WITH OTHERS.”



Gemma Chair by Daniel Libeskind; photo by Alessandro Paderni; portrait by Anna Bussolotto; photos courtesy of Moroso





MICHAEL YOUNG

INDUSTRIAL DESIGNER  
HONG KONG | [michael-young.com](http://michael-young.com)

"I PRAY IN 20 YEARS THAT INTERIORS WILL LOOK AS THEY DO NOW, AND IT IS OUR VALUE AND APPRECIATION OF WHAT WE POSSESS THAT BECOMES THE REAL VISION."



Bramah Light for EQQ, courtesy of EQQ; portrait courtesy of Michael Young Studio



photos courtesy of Edge Design Institute

"IF WE TALK ABOUT HONG KONG, ONE VERY BIG TREND IS THAT PEOPLE'S HOMES ARE GETTING SMALLER AND SMALLER. ON THE ONE HAND, IT SOUNDS SCARY, BUT ON THE OTHER, IT'S ALSO QUITE SUSTAINABLE."



GARY CHANG

MANAGING DIRECTOR, EDGE DESIGN INSTITUTE LTD  
HONG KONG | [edgedesign.com.hk](http://edgedesign.com.hk)



KENNETH COBONPUE

INDUSTRIAL AND FURNITURE DESIGNER  
PHILIPPINES | [kennethcobonpue.com](http://kennethcobonpue.com)

"A NEW HOME BUILT IN AN ASIAN METROPOLIS CAN EASILY LOOK LIKE THOSE BUILT IN LATIN AMERICA OR EUROPE. I WOULD LIKE TO SEE US HOLDING ON TO OUR UNIQUENESS AND CULTURE. OUR HOMES SHOULD BE EXPRESSIONS OF OUR INDIVIDUAL TASTES AND PURSUITS."



Bespoke furniture for Ananyaya Beach Resort, Bohol, photos courtesy of Kenneth Cobonpue

Canto Box by Gary Chang for JIA; photos courtesy of JIA



"THE KITCHEN WILL BECOME THE PLACE WHERE MOST PEOPLE SPEND THEIR TIME. IT WILL EVOLVE AND BECOME MORE THAN A PLACE WHERE YOU PREPARE A MEAL OR WASH THE DISHES - THE KITCHEN WILL TRANSFORM INTO A PLACE WHERE YOU EAT, DRINK, PLAY, WORK AND RELAX."



SPENCER HUNG

DESIGN DIRECTOR, JIA INC.  
TAIWAN | [jia-inc.com](http://jia-inc.com)



PLAplay collection for Journey East; photos courtesy of Journey East

“EXPECT SPACES TO TRANSFORM AND SUPPORT THE ‘NEW NORMAL’ – LIFESTYLES AT HOME, WITH OR WITHOUT HUMAN INTERVENTION. EXPECT EXCITING TIMES.”



FRANCESCA LANZAVECCHIA & HUNN WAI

FOUNDERS, LANZAVECCHIA + WAI  
ITALY | SINGAPORE | [lanzavecchia-wai.com](http://lanzavecchia-wai.com)



CARL GOUW

PRINCIPAL & FOUNDER, ACTS STUDIO  
HONG KONG | [actsstudio.com.hk](http://actsstudio.com.hk)

“A HOME IS NOT JUST FOUR WALLS. WALLS WILL BECOME SCREENS. YOU’LL HAVE SOCIAL MEDIA NOT ONLY ON YOUR PHONE, BUT EVERYWHERE. A HOME WILL BE COMMUNICATION AND CONNECTION.”



Photos courtesy of ACTS Studio

Unam rocker for Very Wood; photos courtesy of Sebastian Herkner



“WE ARE LIVING IN A GLOBALISED WORLD AND GET INFORMATION VERY FAST ONLINE, SO VIRTUAL LIFE WILL BECOME MORE IMPORTANT. ON THE OTHER HAND, WE WILL WANT SLOWER, MORE AUTHENTIC MOMENTS IN OUR PRIVATE HOMES. THERE, IT’S ABOUT SUSTAINABILITY, QUALITY, STORYTELLING AND HOSPITALITY.”



SEBASTIAN HERKNER

DESIGNER  
GERMANY | [sebastianherkner.com](http://sebastianherkner.com)



STEFANO SELETTI

ART DIRECTOR, SELETTI  
ITALY | [seletti.it](http://seletti.it)

“IN THE FUTURE, I DON’T WANT TO SEE SPACES THAT ARE NOT USEFUL, CHAIRS THAT YOU CANNOT SIT ON OR FURNITURE THAT CANNOT BE USED.”



Hybrid collection; photos courtesy of Seletti

Charlie Chair Composition 14 by Marcel Wanders for Moooi; photos courtesy of Marcel Wanders



“PERSONALLY, I TRY TO DO SOMETHING I HAVEN’T DONE BEFORE EVERY DAY. IF THERE IS A CUTTING-EDGE TECHNOLOGY OR A NEW BUSINESS MODEL I ENCOUNTER, I WANT TO KNOW EVERYTHING ABOUT IT, AND LEARN HOW TO PUSH IT FURTHER.”



MARCEL WANDERS

PRODUCT AND INTERIOR DESIGNER  
NETHERLANDS | [marcelwanders.com](http://marcelwanders.com)





“I HOPE HONEST MATERIALS WILL STILL BE SOMETHING WE APPRECIATE IN THE FUTURE AND THAT PEOPLE WON’T SEEK FAKE ALTERNATIVES – I’D LIKE TO GET RID OF COPYING IDEAS.”



String chair; photos courtesy of Menu

JOACHIM KORNBEEK HANSEN

DESIGN & BRAND MANAGER, MENU  
DENMARK | [menu.as](http://menu.as)

Ports 1961 boutique interior; photos courtesy of Yabu Pushelberg



“IN A WORLD GUIDED BY THE INTERNET, NOTHING IS REALLY UNIQUE ANYMORE. I THINK RAREFIED OBJECTS HAVE BECOME MORE IMPORTANT BECAUSE THEY ALLOW THE OWNER AND THE HOME THEY RESIDE IN TO MAINTAIN A SENSE OF IDENTITY AND INDIVIDUALITY.”



GEORGE YABU

CO-FOUNDER, YABU PUSHELBERG  
CANADA | [yabupushelberg.com](http://yabupushelberg.com)



“HOME HAS ALWAYS BEEN CONSIDERED VERY IMPORTANT, BUT WITH THE INCREASE OF PEOPLE’S MOBILITY, I SUPPOSE THAT IN TWO DECADES FROM NOW, IT WILL BE EVEN MORE AN ELEMENT OF STABILITY, SEEN AS AN ANCHOR TO YOUR ROOTS AND FAMILY.”



Mu Collection for Dedon; photos courtesy of Dedon; portrait by Andrea Basile

TOAN NGUYEN

DESIGNER  
FRANCE | [toanguyenstudio.com](http://toanguyenstudio.com)

Snowflake lamp; photos courtesy of David Trubridge



“IT’S NOT GOOD FOR HUMANS TO BE CONSTANTLY SURROUNDED BY CONCRETE. SO IN OUR HOMES, WE NEED TO SEE TREES AND PLANTS, AND WE NEED TO SEE DESIGN THAT EXPRESSES AN ESSENCE OF NATURE.”



DAVID TRUBRIDGE

FURNITURE DESIGNER  
NEW ZEALAND | [davidtrubridge.com](http://davidtrubridge.com)



HARRI KOSKINEN

DESIGNER AND DESIGN DIRECTOR, IITTALA  
FINLAND | [harrikoskinen.com](http://harrikoskinen.com)

“THERE’S GOING TO BE A NEW TREND  
TO LIVE IN THE COUNTRYSIDE WHEN CITIES  
ARE GETTING TOO PACKED.”



Korona LED light for Alvalarte; photos courtesy of Iittala



Photos courtesy of Jason Caroline Design

“WE HAVE CLIENTS ASKING FOR MORE NATURAL  
MATERIALS, AND A LOT OF THEM DON’T WANT  
THE HIGH TECH STUFF. TECHNOLOGY IS  
CONVENIENT BUT IT’S ALSO IN THE WAY.”



JASON YUNG & CAROLINE MA

FOUNDERS, JASON CAROLINE DESIGN  
HONG KONG | [jasoncarolinedesign.com](http://jasoncarolinedesign.com)



COLIN SEAH

DESIGN DIRECTOR, MINISTRY OF DESIGN  
SINGAPORE | [modonline.com](http://modonline.com)

“I THINK THE ROLE OF THE VIRTUAL  
REALM WILL INCREASE, AND IT WILL  
ALLOW US TO USE OUR HOMES AS A BASE  
TO ‘VISIT’ PLACES BEYOND WITH EASE.”



Macalister Mansion; photos courtesy of Ministry of Design



The Berkeley; photos courtesy of AFSO

“A HOME IS ULTIMATELY A PLACE TO LIVE, SLEEP, EAT,  
DRINK – THERE’S NOTHING COMPLICATED ABOUT IT.  
I HOPE THAT PEOPLE AND DESIGNERS WILL  
CONTINUE TO EMBRACE THE SPIRIT OF THAT INSTEAD  
OF CONTINUALLY TRYING TO CHALLENGE THE  
CORE VALUE OF WHAT THE HOME IS.”



ANDRÉ FU

FOUNDER, AFSO  
HONG KONG | [afso.net](http://afso.net)



ANDREAS ENGESVIK

DESIGNER  
NORWAY | [andreasengesvik.no](http://andreasengesvik.no)

“WE ALL NEED TO CONSUME LESS AND HAVE  
A MUCH STRONGER SCOPE AND APPRECIATION  
OF QUALITY, SUSTAINABLE PRODUCTS.”



Silent Vases for Muuto; photos courtesy of Andreas Engesvik



Photos courtesy of Chang Bene Design



"I THINK THAT PEOPLE WILL BEGIN TO LOOK AT ALTERNATIVE SPACES, SUCH AS ABANDONED WAREHOUSES AND SCHOOLS, THAT WILL BE RESTORED AND REMODELLED."



SHIRLEY CHANG

CO-FOUNDER, CHANG BENE DESIGN LTD  
HONG KONG | [changbenedesign.com](http://changbenedesign.com)



ROMEO SOZZI

FOUNDER, PROMEMORIA  
ITALY | [promemoria.com](http://promemoria.com)

"PIECES OF FURNITURE WILL BE PASSED DOWN FROM FATHER TO SON, BRINGING WITH THEM A GREAT SENTIMENTAL CONNOTATION AS NOT ONLY PIECES OF FURNITURE, BUT 'PIECES OF FAMILY.' PEOPLE WILL COLLECT MORE AND MORE VINTAGE PIECES, AND THERE WILL BE A NEW CLASS OF CRAFTSMEN ABLE TO GIVE LIFE BACK TO THOSE PIECES."



Tomsole table in onyx,  
photos courtesy of Promemoria

Photos courtesy of Martyn Lawrence Bullard



"I BELIEVE HOMES WILL BE SIMPLIFIED, WITH COMFORT AT THEIR CORE. THE ABILITY TO CHANGE THE COLOUR OF THE WALLS AT THE TOUCH OF A SWITCH, PROBABLY PROJECTED FROM A COLOUR-FILTERED LIGHT SOURCE, WILL BE A STANDARD DECORATING PRACTICE."



MARTYN LAWRENCE BULLARD

INTERIOR DESIGNER  
US | [martynlawrencebullard.com](http://martynlawrencebullard.com)



MARISA YIU & ERIC SCHULDENFREI

FOUNDERS, ESKYIU  
HONG KONG | [eskyiu.com](http://eskyiu.com)

"WE SHOULD ASK OURSELVES HOW WE CAN ALLOW FOR LEISURE AND COMMUNITY, AND HOW CAN WE DESIGN THAT IN A WAY THAT'S MUCH MORE POWERFUL THAN JUST STRONG ARCHITECTURAL LANDSCAPES."



Photo credit: Juli Bialk; portrait courtesy of Eskyiu





STEVE LEUNG

FOUNDER & CHAIRMAN, STEVE LEUNG DESIGNERS LTD  
HONG KONG | [steveleung.com](http://steveleung.com)

"IN 20 YEARS, I DON'T THINK THERE'S GOING TO BE A BIG CHANGE. WHATEVER IS IN STYLE NOW MAY NOT BE IN STYLE IN 20 YEARS, BUT IT MAY COME BACK IN 30 YEARS, BECAUSE DESIGN IS A CYCLE AND ALWAYS COMES BACK AGAIN."



Pearlman dining room series; photos courtesy of SD



Photos courtesy of G.O.D.

"HONG KONG HOMES WILL BE MORE CHINESE, AND THAT'S A GOOD THING. BY 2040 WE WOULD BE A LOT MORE CONFIDENT OF WHO WE ARE AND STRONGER AS A SOCIETY - THAT WOULD BE REFLECTED IN OUR LIFESTYLE."



DOUGLAS YOUNG

CO-FOUNDER, GOODS OF DESIRE (G.O.D.)  
HONG KONG | [god.com.hk](http://god.com.hk)



ALVIN TJITROWIRJO

FOUNDER AND CREATIVE DIRECTOR, ALVIN-T  
INDONESIA | [alvin-t.com](http://alvin-t.com)

"IMAGINE IF A HOUSE IS BUILT USING LIVING NATURAL MATERIALS. HAVING A LIVING TREE IN THE MIDDLE OF THE LIVING ROOM IS COMMON - BUT HAVING LIVING TREES AS THE HOUSE STRUCTURE? THE HOUSE CAN ACTUALLY GROW UP WITH THE TREE AND IT WOULD CREATE A DIFFERENT EXPERIENCE OF LIVING."



Tajfelia Chair for Moooi; courtesy Moooi  
Portrait courtesy AlvinT Studio



Photo credit: Anita Ng @ESVigo; portrait Budget Fleming

"ALL THE WINDOWS WILL BE SOLAR PANELS, SO YOU'LL BRING IN THE ENERGY, AND THEY'LL ALSO BE VIRTUAL. IF WE BEGIN TO BUILD VERTICALLY, THERE'S GOING TO BE NO VIEW - SO WITH VIRTUAL-REALITY WINDOWS, YOU CAN CHOOSE YOUR OWN VIEW."



LEE HSU & SHAMIM DIN

CHIEF DESIGNER OF INTERIORS AND ASSOCIATE, INTERIORS BY DIZAIN  
HONG KONG | [interiorsbydizain.com](http://interiorsbydizain.com)



“THERE WILL BE MUCH LESS BUILT-IN FURNITURE AND LARGE, HEAVY ITEMS. PEOPLE WILL BE USED TO MOVING MORE FREQUENTLY AND SUBSEQUENTLY, WILL COLLECT DESIGN ITEMS THAT THEY CAN TAKE WITH THEM.”

MAGNUS SANGILD

HEAD OF PRODUCT DEVELOPMENT, BY LASSEN DENMARK | [bylassen.com](http://bylassen.com)



Kubus Brass Family, photos courtesy of By Lassen



The Naka Phuket courtesy of The Naka Phuket; portrait courtesy of DBALP

“MAYBE DESIGN IS NOT ABOUT ASKING WHAT’S NEW OR WHAT’S THE CONCEPT, BUT WHAT IS POSSIBLE WITHIN THE CONTEXT? IN THAT WAY, THINKING MIGHT ALLOW A MORE FLUENT CREATIVITY.”



DUANGRIT BUNNAG

ARCHITECT, DBALP THAILAND | [dbalp.com](http://dbalp.com)



“TRENDS ALWAYS REACT AGAINST THE ONE THAT CAME BEFORE IT, SO I WOULDN’T BE SURPRISED IF WE SAW A NEW ERA OF MINIMALISM WITHIN 20 YEARS. WE SEEM TO BE RIDING A HIGHLY DECORATIVE WAVE AT THE MOMENT.”

GREG NATALE

INTERIOR DESIGNER AUSTRALIA | [gregnatale.com](http://gregnatale.com)



Photos courtesy of Greg Natale

“I THINK OUR PAST – OUR HERITAGE, OUR CULTURE – WILL NEVER DISAPPEAR. TECHNOLOGY WOULD BE ADVANCED, BUT NOT SO ADVANCED THAT WE COULD RECREATE THE EXACT SAME PICASSO.”



ANTONY CHAN

CREATIVE DIRECTOR, CREAM AND CHAIRMAN, HONG KONG INTERIOR DESIGN ASSOCIATION HONG KONG | [cream.com.hk](http://cream.com.hk)



Photos courtesy of Cream