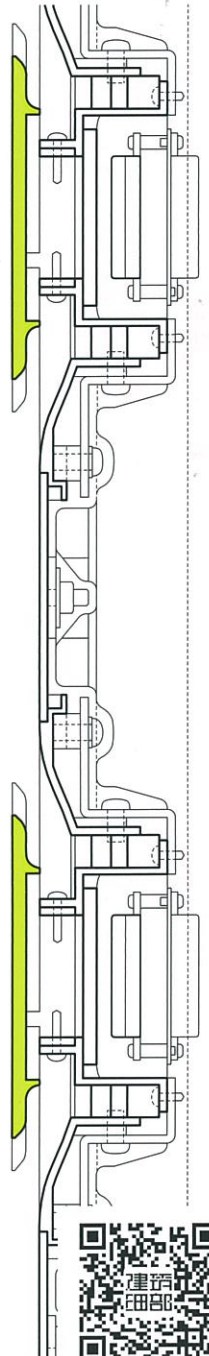
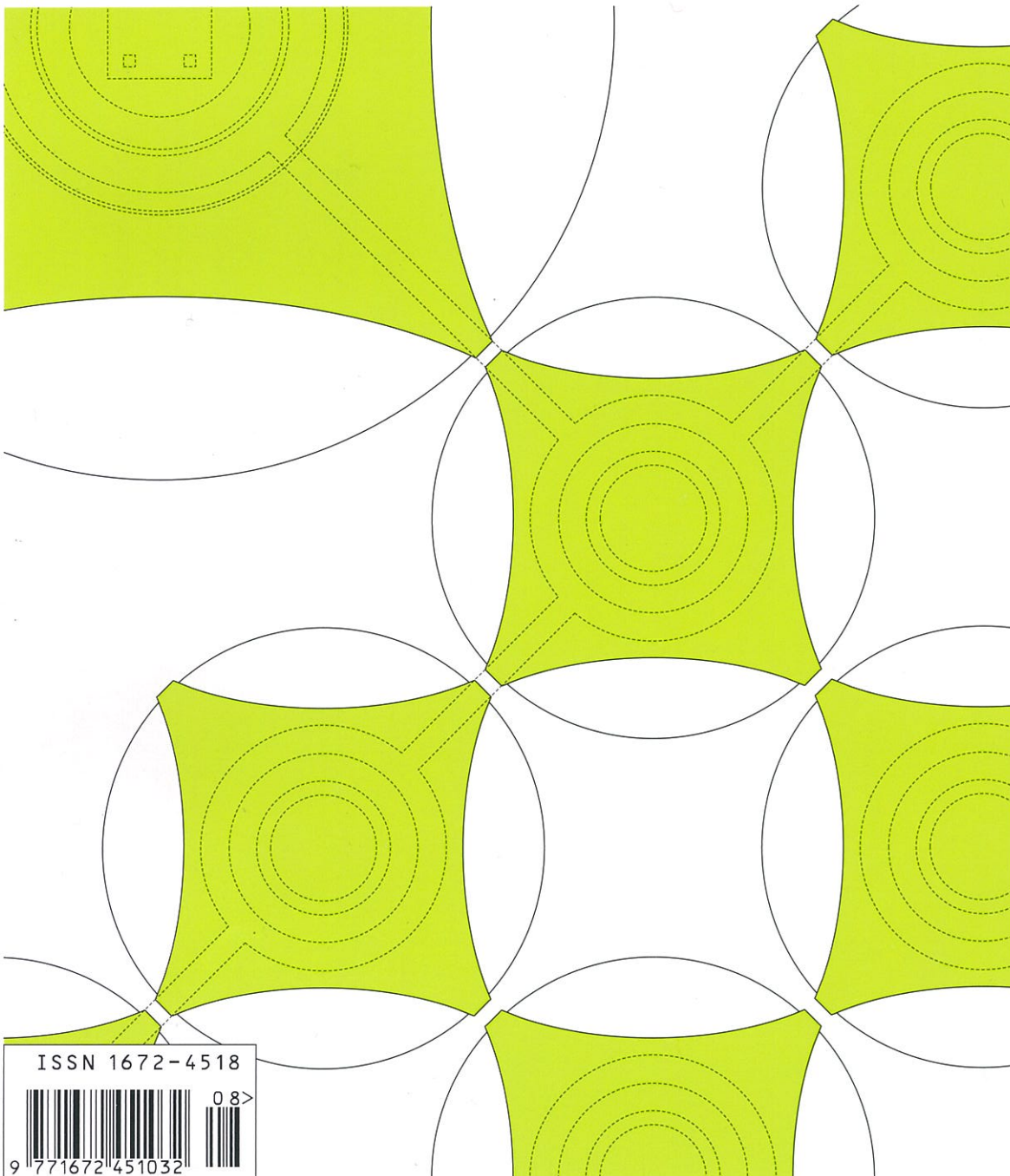


Architecture &
DETAIL

建筑细部

第13卷第4期 2015年8月 | 68.00元

材料与饰面 | Materials and Finishes



ISSN 1672-4518

08



9 771672 451032



100PP办公大楼

100PP Office Building

建筑与室内设计: Ministry of Design

设计团队: Colin Seah, David Tan, Jeremiah Abueva, Zsombor Baktay, Don Castaneda, Charissa Ho, Norberto Olegario, Ruth Chong, Arnel Anoneuvo

甲方: CEL Development Pte Ltd

承包商: CES Building and Construction Pte Ltd

结构工程: Engineers Partnership LLP

机电工程: HPX Consulting Engineers

开放时间: 2014.7

地点: Singapore



总平面图
比例 1:4000
Site plan
scale 1:4000

该设计任务是为新加坡新兴的黑领创意阶层策划、打造品牌并设计一个创意中心。近年来，众多设计公司接连迁出了中央商务区，受较为低廉的房价的吸引，搬到了楼面板更大、天花板更高的轻工业区或仓储区。对这样一座商业建筑的设计也利用了这些关键特征，还引入了许多重要的建筑形态。这些形态旨在重新定义这种商业建筑的本质，也提供了为开发项目增添大量附加值的经验。

首先，为了利用基地临海的条件，建筑师采用了一系列纵贯各个楼层的“阶梯式”阳台。这种设计让建筑物好似远离了它前方川流不息的高架公路。

其次，建筑在横向上也有移动，让人感觉它是由一系列有活力的体块堆叠而成的，而不是一个静止的建筑单体，从而使该建筑打造出一道独一无二的天际线轮廓。

第三，建筑立面由许多不同的元素构成，建筑师从美学的角度将它们结合在一起：主要是窗户、阳台和空调层平台。建筑师有意将一系列水平带状结构一层层地排列在立面上，模糊了每种元素的定义。这些带状结构在整个建筑中产生了视觉上水平移动的感觉，也强调了不同体量的移动与堆叠的特性。深浅不一的灰色的应用可产生水平带状结构所需的色调变化。这个水平带状结构也同样被用在了建筑周围的景观和硬景观元素上。

最后，建筑内部体验特别采用了一种风格化的工业美学方式，譬如在不同的楼层都大胆使用有特色的照明装置、材料和环境标识设计。主要的内部空间包括电梯大堂和落客区，另外建筑物还提供了一个可以俯瞰大海的屋顶花园空间。





楼层平面图

比例 1:1000

剖面图

比例 1:800

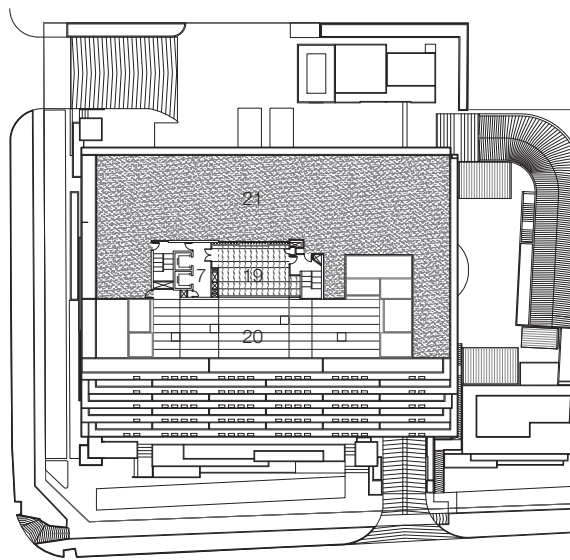
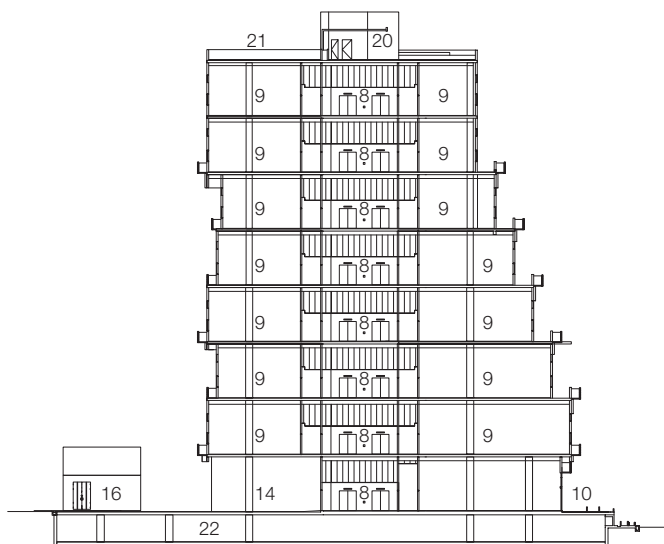
- 1 车辆入口
- 2 落客区
- 3 车辆等候处
- 4 有顶停车场
- 5 通往B1停车场的坡道
- 6 公用走廊
- 7 电梯大堂
- 8 货梯电梯间
- 9 办公室
- 10 露台
- 11 食堂
- 12 厨房
- 13 维修车入口

- 14 装卸货区
- 15 公共卫生间
- 16 变电站
- 17 西警卫室
- 18 南警卫室
- 19 带格架的屋顶平台
- 20 屋顶平台
- 21 机电设备平台
- 22 地下停车场

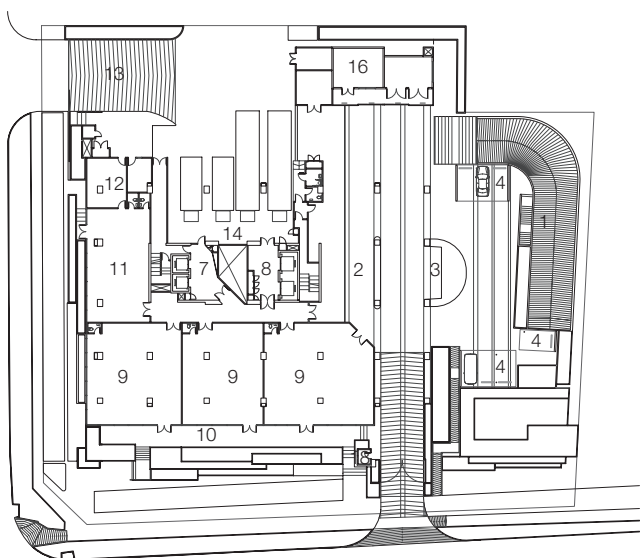
Floor plans
scale 1:1000
Section
scale 1:800

- 1 Vehicular entry
- 2 Passenger drop-off
- 3 Vehicle waiting

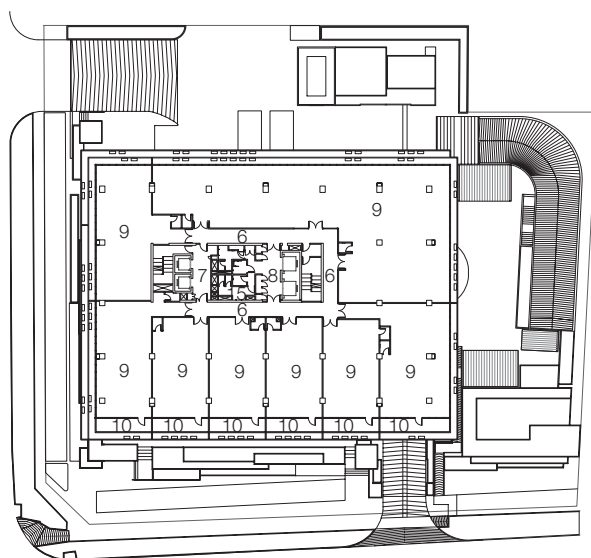
- 4 Covered parking
- 5 Ramp to B1 parking
- 6 Common corridor
- 7 Lift lobby
- 8 Service lift lobby
- 9 Office unit
- 10 Terrace
- 11 Canteen
- 12 Kitchen
- 13 Service truck entry
- 14 Loading/unloading bay
- 15 Public toilets
- 16 Substation
- 17 West guardhouse
- 18 South guardhouse
- 19 Roof terrace with trellis
- 20 Roof terrace
- 21 MEP platform
- 22 Basement parking



屋顶
Roof



一层
Ground floor



标准层
typical plan

The commission is to strategize, brand and design a creative epicenter for the emerging black collar creative class in Singapore. In recent years, design firms have been migrating out of the CBD areas in waves, gravitating towards more affordable light industrial or warehouse districts, with larger floor plates and higher ceilings. The design for such a commercial building capitalizes on these key traits and also introduces a number of key architectural gestures. These gestures aim to redefine the nature of such commercial buildings and also to provide an experience that adds a substantial premium to the development.

Firstly, to exploit the sea-fronting context of the site, the architects have introduced a series of “stepped” balconies across the different floor levels. These allow the building to appear to be shifting away from the busy elevated highway fronting the building.

Secondly, the building have also been shifted laterally to create a sense that it comprises a series of dynamic blocks stacked one above the other rather than a static singular block. This allows the building to create a unique profile against the skyline.

Thirdly, the facade of the building comprises a number of different elements which the architects bound together



aesthetically: primarily the windows, balconies and air-condition ledges. They have intentionally blurred the definition of each element by layering a series of horizontal stripes throughout the facade. The stripes generate visually movement horizontally across the building and also emphasize the shifting and stacked nature of the different volumes. A palette of varying grays is employed to generate the variety of tones required for the horizontal banding. This horizontal striping is also applied consistently to the landscape and hardscape elements surrounding the building.

Lastly, the interior experience celebrates

a stylized industrial aesthetic through the bold use of feature lighting, materials and environmental graphics across the different floors. Key interior spaces include the lift lobbies and passenger drop off point and the building also provides a roof top garden space overlooking the sea.



