

S I N G A P O R E T A T L E R

# HOMES

*Living . Luxurious*

50

**MOST  
INFLUENTIAL  
IN SINGAPORE  
DESIGN**

**HIGHLIGHTS FROM  
EUROLUCE 2015**

**10 LUXE VANITY  
STYLES**

**STYLE &  
SUBSTANCE**

SOPHISTICATED HOME INTERIORS DESIGNED  
WITH PERSONALITY AND PRACTICALITY





SINGAPORE TATLER  
**HOMES**  
*Living . Luxurious*

# 50

**MOST INFLUENTIAL**  
In Singapore Design  
**2015**

---

THE NATION'S DESIGN SCENE HAS COME A LONG WAY SINCE ITS INDEPENDENCE 50 YEARS AGO. **SINGAPORE TATLER HOMES** HONOURS THE MEN AND WOMEN WHO PAVED THE WAY AND CONTINUE TO PUSH BEYOND THE BOUNDARIES OF EXCELLENCE IN INTERIOR, ARCHITECTURE AND PRODUCT DESIGN

---

BY OLHA ROMANIUK AND YOUNG LIM IMAGES COURTESY OF RESPECTIVE INDIVIDUALS AND COMPANIES

# BEACONS OF INSPIRATION

*Trailblazers whose achievements have made an impact on the local design landscape*



**CHAN SOO KHIAN**  
SCDA

Based in Singapore, Chan studied architecture at Washington University and Yale University. He began his career at Kohn Pederson Fox (KPF) in New York. Chan set up SCDA in 1995, bringing his expertise acquired at KPF and his interest in the Southeast Asian vernacular design to his practice here. A recipient of numerous awards, including the President's Design Award 2006 (Designer of the Year), SIA-Getz Architecture Prize for Emergent Architecture in Asia and two RIBA International Awards, Chan Soo Khian is a mastermind behind the National Design Centre – the new design hub in Singapore – and SkyTerrace @ Dawson.



**NANA AU-CHUA**  
MILLION LIGHTING

As COO of one of Singapore's pioneer lighting companies, Nana Au-Chua leads Million Lighting in setting benchmarks in innovative lighting solutions for architects, engineers and interior designers. Having worked as a banker before joining Million Lighting in 1999, she is responsible for developing the business in Singapore and the region and for identifying emerging trends in the lighting design industry. Under the leadership of Chua and her family, Million Lighting has become the preferred company for customised lighting solutions for clients like the Amara Sanctuary Resort, Singapore, Gardens by the Bay and Iluma shopping complex.



**RICHARD K F HO**  
RICHARDHO ARCHITECTS

Ho is founder of his eponymous architecture firm and an adjunct associate professor in the Honours and Masters degree courses in the Department of Architecture at NUS. He has won numerous prizes for his work, including six SIA Design Awards and five Urban Redevelopment Authority Architectural Heritage Awards, as well as the President's Design Award 2013 (Designer of the Year).



**KOH SEOW CHUAN**  
DP ARCHITECTS

A key founder of Design Partnership in 1967 (renamed DP Architects in 1975), Koh Seow Chuan has taken his firm from a homegrown practice to a leading multi-disciplinary architectural firm in Singapore and Asia. Koh worked on numerous landmark projects, including the People's Park Complex and Esplanade – Theatres on the Bay, and is a Life Fellow at the Singapore Institute of Architects.



**BELINDA HUANG**  
**KHOO PENG BENG**  
ARC STUDIO ARCHITECTURE  
+ URBANISM

Khoo (right) and Huang (left) founded Arc Studio Architecture + Urbanism in 1999. They won acclaim for their winning entry to the Duxton Plain Public Housing Design Competition in 2001. After their design of the Pinnacle@Duxton, the husband-and-wife team went on to design residential projects, including L'viv in Singapore.



**CHRIS LEE**  
ASYLUM

Founder of multi-disciplinary creative company Asylum in 1999, Lee is a prominent member of the Singapore's design community and recipient of the President's Design Award 2009 (Designer and Design of the Year). Lee served as a juror for many international creative awards, such as The One Show and Tokyo Directors Club. He is also a founding member and President of The Design Society.



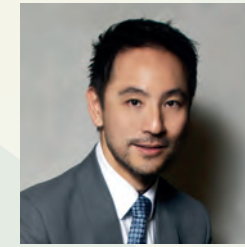
**LIM CHOON HONG**  
XTRA

Having spent the first few years of his career working at Abraxas and at Space Partnership, Lim Choon Hong started Xtra with three other partners in 1989. Since then, Xtra has evolved from a niche eclectic design store to a 20,000 sq ft flagship store in Park Mall and three other smaller showrooms. In 2014 the company celebrated its 25th anniversary marking a quarter century of history in the design scene of Singapore.



**TAN CHENG SIONG**  
ARCHURBAN ARCHITECTS  
PLANNERS

Tan Cheng Siong has been at the forefront of residential design in Singapore and China. He is the architect behind the design of Pearl Bank Apartments and a pioneer of the first condominium typology in Singapore in Pandan Valley. He is a Fellow (Life) member of the SIA and recipient of the President's Design Award 2012 (Designer of the Year) and the 2013 SIA Gold Medal.



**ONG TZE BOON**  
ONG&ONG GROUP

Having worked with Frank O. Gehry & Associates, Ong Tze Boon joined Ong&Ong as an architect in 1994 and became its chairman in 2007. As a chairman, Ong introduced a holistic design process encompassing urban planning, architecture, interior and landscape design – an approach now known as Ong&Ong's 360° Solution. In 2015, he became the President of the Singapore Institute of Architects Council.



**JACKSON TAN**  
PHUNK/BLACK

Tan is designer of the brand concept and identity of SG50 for Singapore's Jubilee year. He is co-founder of Phunk – a modern design collective (1994) and Black – a multi-disciplinary creative agency (2002). Tan presented a showcase of Singapore's best design talents, 20/20, at the London Design Festival 2006 and was awarded President's Design Award 2007 (Designer of the Year).



**PETER TAY**  
PETER TAY STUDIO

Often referred to as the celebrity interior designer to the stars, Tay has designed interiors for celebrities, such as Zhang Ziyi and Zoe Tay. Peter Tay graduated from the Architectural Association in London in 2000 and started his own practice in 2001. In addition to working with popular icons, Tay's portfolio also consists of high-profile residential and commercial projects, including boutiques and showrooms for Manolo Blahnik, and luxury showflats that include The Met in Bangkok and Martin 38 in Singapore. Tay won the President's Design Award 2008 (Designer of the Year) and published his monograph in 2013. Recently, Tay also participated in the "Time-Space-Existence" exhibition at Palazzo Bembo at the Venice Biennale in 2014.



## HONORARY TRIBUTE



### MILTON TAN (1954 - 2010)

Milton Tan contributed immensely to Singapore's design scene with his influential involvement in programmes and initiatives to promote and develop the country's design sector. He was a Fellow at (then) Ministry of Information, Communications and the Arts, Singapore, from 2002 to 2009, and founding executive director of the DesignSingapore Council (Dsg). Tan's directorship propelled an establishment of the annual President's Design Award and the biennial Singapore Design Festival, among other successful initiatives. Instrumental in developing international design relationships, Tan recognised the importance of highlighting Singapore design on a global scale. He was involved in the signing of five international Memorandums of Understanding with the International Federation of Interior Architects/Designers, the Korea Institute of Design Promotion, the State of Victoria, Australia, the Vitra Design Museum and the government of the Kingdom of Denmark. Tan also commenced Singapore's involvement in the Venice Biennale International Architectural Exhibition with a successful nine-week inaugural presentation in 2004. For his unwavering dedication to Singapore design, Tan was conferred The Public Service Medal by the President of Singapore in 2009.



**TAY KHENG SOON**  
AKITEK TENGGARA

Tay established Design Partnership in 1967 (renamed DP Architects in 1975) with William Lim and Koh Seow Chuan. He is the founder of Akitek Tenggara and was president of the SIA from 1991 to 1993, among many other posts. A recipient of the SIA Gold Medal in 2010, Tay's book *Mega-cities in the Tropics* led to a development guide plan for a 'Tropical City Concept' here in Singapore.



**SYDDAL WEE**  
MACSK

GM of Macsk, Wee is well known for raising the bar in presentation of premium design brands. One of Wee's biggest contributions to Singapore's creative scene is the establishment of Space Furniture Singapore as the dominant purveyor of premium design furniture and accessories in Asean region and beyond, as well as the retrofit of three historic colonial buildings for Space Asia Hub's showroom.



**WONG MUN SUMM AND RICHARD HASSELL**  
WOHA

Founding directors of WOHA, Wong (left) and Hassell (right) changed the urban cityscape of Singapore since establishing their firm in 1994. The firm received eight President's Design Awards, four World Building Awards and the 2007 Aga Khan Award for Architecture, among others. WOHA's notable projects include SkyVille@Dawson and Parkroyal on Pickering.



**NATHAN YONG**  
NATHAN YONG DESIGN

Nathan Yong began his career as a buyer and product developer for various companies in Singapore. Yong won the Red Dot Concept Design Award in 2006 and 2007 and President's Design Award (Designer of the Year) in 2008. Besides managing his industrial design consultancy practice, Yong is also the founder of a popular furniture brand Folks Furniture and a retail-based company Grafunkt.

## THE HEADLINERS

### INFLUENCERS AND NEWSMAKERS OF THE DESIGN SCENE



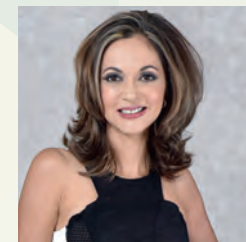
**SIMON CHEONG**  
SC GLOBAL DEVELOPMENTS

Cheong is chairman and CEO of SC Global Design. Under his direction, his team collaborated with architects and professionals on several award-winning residential projects and lifestyle concepts. SC Global launched a number of landmark projects over the years, including The Lincoln Modern in 2002, The Marc on Patterson Hill in 2010 and the upcoming Sculptura Ardmore in late 2015.



**HANSON HO**  
H55

Founder of H55, Ho is a two-time winner of the President's Design Award and mastermind behind many publications and visual identities representing Singapore on an international level. He garnered the New York One Show Silver and Gold Pencils awards. Ho is curator for the Singapore Land Transport Authority Art-in-Transit Programme for Downtown Line stations and Head of Design Jury for Creative Circle Awards 2014.



**NIKKI HUNT**  
DESIGN INTERVENTION  
Nikki Hunt started Design Intervention with Andrea Savage in 2004. With her work featured in the *Andrew Martin Interior Design Review*, Hunt is the only Singapore-based designer to have been selected for this distinction for three years in a row. A winner of the International Property Award 2014 for Best Interior Design (Residence), Hunt helped launch the Young Designer of the Year Award in 2015.



**NIRMAL KISHNANI**  
SCHOOL OF DESIGN AND ENVIRONMENT, NUS; FUTURARC  
Educator, Green advocate and strategist, Kishnani helped shape curriculum at NUS, where he is Assistant Dean (School of Design and Environment). His book *Greening Asia* eschews Green checklists and develops a design vocabulary for sustainability. He is editor-in-chief of *FuturArc*, a bimonthly magazine offering a glimpse of green architecture in and around Asia.



**EVELINA HU**  
THE PLUSH

Evelina Hu specialises in modern and classical designs in commercial and residential sectors. Her work has attracted attention from both commercial and residential clients, as well as property developments and international businesses. Hu's well-rounded approach to design reflects the clients' lifestyles and encompasses interior design and bespoke furniture appointments handcrafted by artisans from around the world. Working with established craftsmen is part of her signature style and what sets her projects apart from others in the industry. Hu is a recipient of the SME Prestige Award 2015 for her outstanding work.

PHOTO CREDITS: WOHA: MARK TEO; MILTON TAN: RYAN TAN

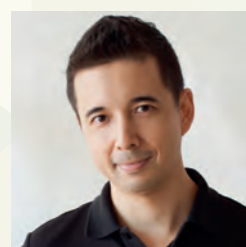




**EDMUND NG**  
SUYING METROPOLITAN STUDIO  
Ng represented Singapore with his work featured in the 2014 edition of Venice Architecture Biennale at the Time Space Existence exhibition. Edmund Ng is a director of Suying Metropolitan Studio, an established interior design firm with projects across three continents, founded in 1999. Always trying to find new grounds for interior design, Ng recently completed a number of high-profile works, including his condominium project - One Rosyth, which was showcased at the Venice Architecture Biennale.



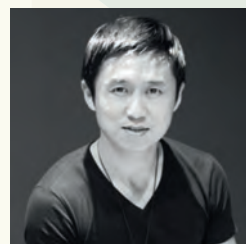
**ANGELA LIM**  
SUMISURA  
Lim conceived the design consultancy and interior planning firm in 2009. Known for her couture-style show flats, her other notable projects include One Shenton Sky Suite, a project that garnered silver award at the Hospitality Design Furniture Luxurious Projects Asia Summit Awards 2013 under Top Luxury Residential Design, and The Esta Project that received an Asia Pacific Property Award 2013.



**JARROD LIM**  
ARROD LIM DESIGN; HINIKA; DESIGN AVANT  
Lim has worked for international design houses, including the studio of Patricia Urquiola in Milan and the furniture brand SCP in London. He operates Jarrod Lim Design in Singapore and has an in-house brand of designer furniture and accessories, Hinika. Lim has collaborated with Patricia Urquiola and WOHA Architects on the interior design for the upcoming PS100/Oasia Hotel.



**YUNG ONG**  
PROOF LIVING GROUP  
As executive director, he has brought to Singapore the best of designer furnishings, transforming Proof Living from a furniture supplier to a renowned lifestyle group. With lifestyle and design events, like the Dream Tent sale at its affiliate store, and exclusive brand launches, Proof Living Group has become one of the leading lifestyle groups, providing access to exclusive collections of home accessories and furniture.



**ED ONG**  
DWELL INTERIOR DESIGN  
Creative director and founder of Dwell Interior Design, Ed Ong creates bespoke interiors for private residences, retail and showroom environments. Since its establishment in 2005, Dwell grew into a full service interior design house, building a portfolio of prominent projects including bespoke residences at The Sail @ Marina Bay and businesses like The Cheongsum Shoppe and the Blum showrooms.



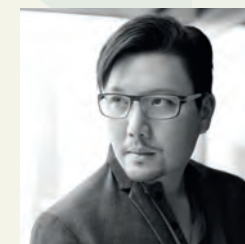
**COLIN SEAH**  
MINISTRY OF DESIGN  
Colin Seah worked for architects Rem Koolhaas and Daniel Libeskind before founding Ministry of Design in Singapore. Seah has been named Designer of the Year by International Design Awards (USA) and is a two-time recipient of the President's Design Award (Design of the Year). Recently, Seah has been invited by the Singapore Tourism Board to redefine Singapore as a destination for 2020 and beyond.



**HANS TAN**  
HANS TAN STUDIO; DIVISION OF INDUSTRIAL DESIGN, NUS  
Hans Tan is a designer and an educator, who maintains a keen interest in developing materials and processes, while exploring ideas concerning identity, heritage, and consumption. He was the recipient of the President's Design Award 2012 (Designer of the Year) and was named as one of Perspective's 40 under 40, celebrating design talent in the Asia-Pacific region.



**JEREMY TAY**  
**MICHAEL ONG**  
PRESTIGE GLOBAL DESIGNS  
Tay (left) formed the design firm with Ong (right), a London-trained award winning interior designer, in 1998. Together Tay and Ong have built a roster of notable projects that include the Marina Bay Residences and The Light @ Cairnhill and went on to receive numerous recognitions, such as Singapore's Highly Commended Interior Design (Private Residence) 2014.



**ROY TEO**  
THE MILL GROUP - DESIGN CONSORTIUM: KRI:ET ASSOCIATES, THE I.D. DEPT, SPLENDOR, XXII CENTURY  
Roy Teo is the founder of The Mill and leads Kri:et Associates as the authority on bespoke residences, specialising in exclusive interiors for celebrity clients. With projects like the Billionaire Salon, Teo received numerous awards for his work, including the Patron of The Arts Award from the National Arts Council.



**SONG KEE HONG**  
DIVISION OF INDUSTRIAL DESIGN, NATIONAL UNIVERSITY OF SINGAPORE  
Song Kee Hong is a deputy head and an associate professor in the Industrial Design Division, National University of Singapore (NUS), having previously worked as a design director at Design Exchange. Song Kee Hong has received many design awards, including the Red Dot: Luminary prize, and served on the jury of the Singapore Good Design Mark 2015 and Red Dot Award 2015.

PHOTO CREDITS COLIN SEAH: MINISTRY OF DESIGN; SARAH THAM: TIM NOLAN; SONG KEE HONG: JAPAN INSTITUTE OF DESIGN PROMOTION





**SARAH THAM**  
CUBE ASSOCIATE DESIGN PTE LTD.  
After graduating from the Interior Design program at Nanyang Academy of Fine Arts in 1998, Sarah Tham established her design consultancy firm, Cube Associate Design, the same year. A recipient of prestigious awards, such as the Singapore Interior Design Society Nippon "Color My World" 2003 distinction award, Tham is currently working on her latest project – a revamp of a former client's hair salon that Tham herself designed 10 years ago.



**DAVID THAM**  
STUDIONORM DESIGN CONSULTANTS  
As a creative director David Tham has represented Singapore's design talents at Asia Talents in Bangkok, and International Furniture Fair Singapore. He served on a judging panel at the IFFS and is involved with NAFA as an adjunct lecturer. His company received an outstanding placement distinction at the Singapore Top SME Achievers Awards 2014/2015.



**HUNN WAI**  
LANZAVECCHIA + WAI DESIGN STUDIO  
Hunn Wai (left) established Lanzavecchia + Wai Design Studio with Francesca Lanzavecchia in 2009. Lanzavecchia + Wai was named by Newsweek magazine as one of the Designers of the Future in 2012 and received multiple awards including the Young Design Talent Award at the Elle Deco International Design Awards 2014.



**MARK YONG**  
SINGAPORE FURNITURE INDUSTRIES COUNCIL; EWINS; UBERGARD  
Yong is chairman of the Green and Standards Committee at the Singapore Furniture Industries Council and the newly initiated chairman of the Design Development Committee and SingaPlural. Yong is also on the Board of Directors for the SFIC Institute and member of Singapore Furniture Industry Independent Expert Panel.



**TIAH NAN CHYUAN**  
FARM  
Tiah worked in the Urban Redevelopment Authority, as an urban planner, before joining his schoolmates at Farm in 2009. This cross-disciplinary practice comprises an architectural atelier, a curatorial team and a community-centred arts organisation at once. Farm's awards include 2013 URA Architectural Heritage and Art Connector Design for the National Gallery Singapore in 2014.

## THE NOTEWORTHY AWARD-WINNING HOMEGROWN TALENTS TO WATCH



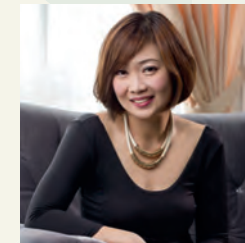
**LH CHAN**  
TDC & ASSOCIATES  
LH Chan is the principal designer of TDC & Associates, a luxury interior design company founded in 1993. Responsible for the design and build of the SK-II first flagship "boutique spa" in Southeast Asia, TDC & Associates received multiple awards, including the Asia Pacific Property Awards 2014-2015 and was shortlisted for the Andrew Martin Interior Design 2015 Award.



**KAREN GAN**  
KARENGANDESIGN  
Karen Gan is design director at Karengandesign, possessing more than 15 years of experience working in Singapore and the United States. Since 2009, she has amassed a roster of clients from residential and commercial sectors. Her interior design projects provide a touch of sophisticated luxury to penthouses and residences at Reflections at Keppel Bay and The Pier.



**KELVIN GAN**  
ELEMENTS ID CONSULTANTS  
As the chief designer at Elements ID Consultants, Kelvin Gan is a firm believer that good design is the result of fervent passion, thorough research and sound technical knowledge. Gan's extensive portfolio consists of premium showflats, bungalow and luxurious apartments, including high-end homes for clients at Orchard Residences, St. Regis and Ardmore Park.



**JESS KOH**  
SUMMERHAUS D'ZIGN  
With over a decade of experience in interior design, Jess Koh is the managing partner at Summerhaus D'zign. Koh's design approach relies on drawing a balance between aesthetics and functionality. With projects including multiple local high-end residences and private houses, Koh has received multiple awards, including the Singapore Outstanding Entrepreneur Award 2014.



**HON KIT LEONG**  
**SI JIAN XIN**  
WYNK COLLABORATIVE  
Hon Kit Leong (left) and Si Jian Xin (right) started Wynn Collaborative, a Singapore-based design studio with work centred around spatial design and its related aspects, in 2011. Named by Singapore Architect magazine as one of Singapore's young and rising design firms, Wynn Collaborative creates works that sit at the intersection of architecture, interior, furniture and graphic design and that include residential and commercial projects, such as the Standing Sushi Bar and Jewel Coffee at Raffles Place.

PHOTO CREDITS LANZAVECCHIA + WAI: ANDRE GATURI; JESS KOH: DARREN FRANCIS PHOTOGRAPHY; WYNN: JOVIAN LIM





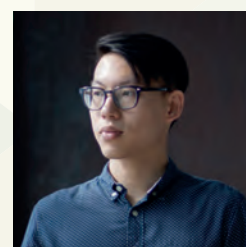
**JUSTIN LONG  
JERRY GOH**  
HJGHER

Justin Long (right) and Jerry Goh (left) are founders of HJgher, a Singapore-based creative consultancy with a focus on design psychology, in 2006. They have worked with brand partners, such as Unlisted Collection and Hermès, and Singapore's celebrity chef-helmed establishments, such as Pollen, by generating and executing award-winning ideas and experiences. In addition to running the firm, Long and Goh also produce the design-centred magazine *Underscore*, which received the President's Design Award 2011 (Design of the Year).



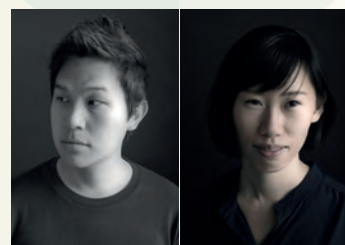
**HILARY LOH**  
2ND EDITION PTE LTD

A partner and design director at 2nd Edition, a boutique design studio, Loh is the driving force behind the studio's substantial portfolio that ranges from residential projects to showrooms for commercial and residential developments, including Auralis and Starlight Suites. 2nd Edition's awards include the Gold Award for 1919 residential development at the Asia Pacific Property Awards 2014-2015.



**MELVIN ONG**  
DESINERE

Melvin Ong worked with London design agency, Brand42, before moving back to Singapore and establishing his studio in 2012. He launched Desinere's first collection at Design Tide Tokyo 2012 and was part of the team that worked on Singapore Icons collection that was awarded the President's Design Award 2013 (Design of the Year). In 2014, Ong was named 'Rising Asian Talent' by Maison et Objet Asia.



**GABRIEL TAN  
WENDY CHUA**  
OUTOFSTOCK

Tan (left) and Chua (right) are co-founders of design quartet, Outofstock, which was formed in 2006 with Gustavo Maggio and Sebastián Alberdi after meeting at Electrolux Design Lab a year earlier. The studio has received multiple awards, including the President's Design Award 2010 (Design of The Year for the 'Black Forest' table) and Rising Talent of 2015 in Maison et Objet Asia.



**TERRI TAN**  
DESIGNWORX INTERIOR  
CONSULTANT

Specialising in hospitality, corporate spaces, retail shops and high-end homes, Terri Tan is a design director at Designworx. Under Tan's directorship, Designworx has accumulated a number of prestigious achievements over the recent years, including an award for the Best Hotel Interior Singapore for Venue Hotel at the Asia Pacific Property Awards 2014-2015.



**ANGELA TANTRY AND STEPHEN GOH**  
METAPHOR STUDIO

Creative director Goh (right), and design principal Tantry (left) established the firm in 2000. They were recipients of the Singapore Design Excellence Awards in residential category and have conducted seminars by the Interior Design Confederation of Singapore.



**YAH-LENG YU AND ARTHUR CHIN**  
FOREIGN POLICY DESIGN GROUP

Creative directors and founders of Foreign Policy Design Group, Yah-Leng (left) and Chin (right) began their careers in New York City. Their projects, including the identity and branding for Wanderlust Hotel and the *Brand Guide: Singapore Edition*, earned them international recognition, such as the Brand New Award and Creative Circle Award.



**TIMO WONG AND PRISCILLA LUI**  
STUDIO JUJU

Studio Juju's directors, Timo Wong (right) and Priscilla Lui (left), practice design across various disciplines in products, furniture and spaces. Wong and Lui have recently designed 'Garden Benches' – public benches tailored specifically to locations within Gardens by the Bay. Their Rabbit & the Tortoise collection for Living Divani received the President's Design Award 2014 (Design of the Year).



**TY ZHENG  
JASON SONG**  
ACRE

Ty (right) and Song (left) co-founded Acre as a graphic design collective in 2011 and developed it into a multi-disciplinary design consultancy that crafts brand experiences in the areas of graphic, interior and product design. Acre's latest project is "Tribute", a tableware series inspired by something all Singaporeans know and use in their daily lives – hawker ware.

PHOTO CREDITS: HJGHER, DESINERE, ACRE, JOVIAN LIM; STUDIO JUJU: XAVIER TEO