

# TAIDD



台中市室內設計裝修商業同業公會發行

Designers' Concept Note

SUMMER 2015  
a quarterly magazine

## 覷隙疊映

*Pisou Kedem*  
以色列 · Layer of White House

*AGi architects*  
科威特 · Ghanim Clinic

*Fran Silvestre*  
西班牙 · Balint House

*beric's allii*  
奧地利 · Office Off

*Cadence architects*  
印度 · Planet Kids Kindergarten

*Los Barbie*  
Rencontre & Miroir Installations

NTD1800E



## UOL Frame Gallery 285

Location : 28 Ann Siang Road, Singapore

Architects : Ministry of Design — Colin Seah, Jeremiah Abueva, Patricia Segado, Anna Kotova, Kevin Leong, Joyce Low, Ruth Chong, Ron Sim, Noel Banta

Developer : UOL Group Limited, Singapore Land Limited

Development Name : Thomson Three

No. of Units : 445 units

Sizes of Units : Type C4Da (3BR premium) : 117sqm / 1,259sqft

Type B1G (2BR) : 82sqm / 883 sqft

Main Contractor : Unison Construction Pte Ltd

ID Contractor : DHdeco Pte Ltd

C & S : TEP Consultants Pte Ltd

M&E : J Roger Preston (S) Pte Ltd

Quantity Surveyor : Langdon & Seah Singapore Pte Ltd

Submissions Architect : MODE Architects Pte Ltd

Built in GFA : 930 sqm

Land Area : 2795 sqm

Facilities : Reception, Model display, Open Discussion Area, Café Bar, Office, Agent's Room, Restrooms, Storage, 2 show units (2 Bedroom Unit, 3 Bedroom Unit)

Photography : Cl & A Photography—Edward Hendricks

## 市聲入林 UOL Frame Gallery 285

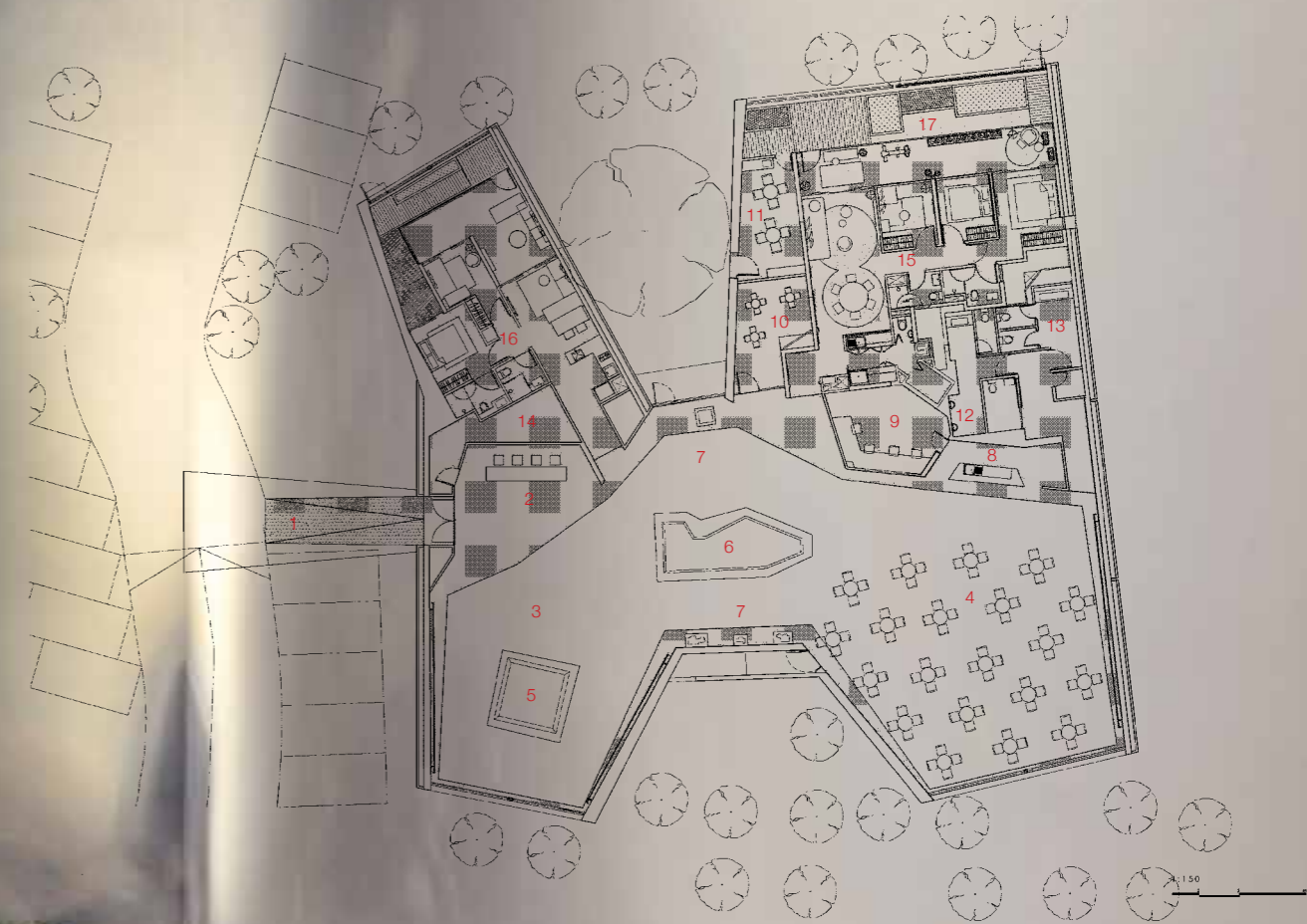
文字：高湘寧

圖片：© Ministry of Design (www.modonline.com)

## Profiles

### About Ministry of Design

Colin Seah 創立之事務所，在美國學習建築，並於新加坡國立大學建築學系修習設計教學與理論課程，曾任職 Rem Koolhaas、Daniel Libeskind 旗下。兩度獲得新加坡設計人最高榮譽獎項 PRESIDENT'S DESIGN AWARD 以及 GOLD KEY AWARD、Hong Kong Perspective's '40 UNDER 40' ARCHITECTS、MARCUS CORPORATION FOUNDATION PRIZE 2007 等國際性獎項。



### SITE PLAN

- |                    |                        |                        |                      |
|--------------------|------------------------|------------------------|----------------------|
| 1. ENTRANCE        | 6. MAIN MODEL          | 11. AGENT'S ROOM       | 16. TWO BEDROOM      |
| 2. RECEPTION       | 7. UNIT MODELS         | 12. MALE TOILET        | 17. INDOOR LANDSCAPE |
| 3. GALLERY         | 8. BAR                 | 13. FEMALE TOILET      |                      |
| 4. DISCUSSION AREA | 9. ADMINISTRATION ROOM | 14. STORE ROOM         |                      |
| 5. VICINITY MODEL  | 10. PLAYROOM           | 15. THREE BEDROOM UNIT |                      |



02



03

02 建築體分別往馬路和自然拉展為四個狹長通道；模型展示區與洽談區的開窗面對馬路，展示銷售場景。

03 室內以模型區為中心，其上多邊曲折的天窗，汲納自然光照。

#### 街角與密林的留白，置入「豆莢」以通連

在著名的新加坡摩天大樓群之外，再之外，往天空延穿的不再是那些玻璃、鋼筋等現代材質語彙，一層樓高的建築特意避開正在生行的林樹，白而輕盈、水平向散射的量體，將樹影流曳的動態披掛於立面，平鋪在對於國際化都市而言十分珍稀的綠帶罅隙——這裡依舊是一座熱帶之島，罩籠於人的，今昔都是疏朗天際與永未荒蕪的仲夏。

此案的基地條件是優勢亦是限制，自然紋理作為背景，適切緩解了建案接待中心的商業調性；另一方面，將建築對植被的影響減降至極低是工程施作的主要前提，因此量體必須小心的嵌入林間，其尺度、形態與室內坪數便可能有所局圍。如何在有限空間

內，設想不循依一般接待中心過於緊密的配比以提升坪效的作法，且充分利用緊鄰 Thomson Road 這條交通要道的環境特點，吸引來往車潮和潛在客戶的注意，MOD 將方形建築主體朝自然環境及繁忙路況兩個迥異端景拉展，構成建築師形容為「豆莢」的四個狹長形出入口，接待中心隱然置換為現代生活、原始地景相互混生的通道。

#### 空間櫥窗，透視入內的展演

接續寧靜卻醞藉生機的皮層外觀，建築內部以模型展示區為中心，上方天花板鑿空、折曲為多邊形立體天窗，篩落了的清淨天光蓋覆著純白空間，觀映四面落地窗以及沿牆面陳列的大型照片，

圍塑出藝廊一般舒散的空間感。模型展示區與洽談區的開口即面對著 Thomson Road，「透過巨大的玻璃窗向往來車輛展示活躍的銷售場景，樓宇模型、平面照片都成為焦點，引動接待中心櫥窗展示的作用。」

兩間樣品屋的並置似乎亦應要採擬櫥窗展示的作用，建築師則反其道而行，以生活實感取代展演意味，將其落地窗開口設於樹群一側，營造居家空間安臥綠意之間的氛圍。兩間樣品屋的空間配置分別為 2、3 居室，2 居室的風格是針對年輕人，3 居室的客群則針對較高的消費階層，皆以簡約明快的現代風格為基底，搭配設計感強烈的裝飾物件或是成熟精緻的經典單品，用以區劃不同客群的愛好。購買或不，商業手法的運作與景觀生態的護持不再是一場論辯，綠蔭光塵，涵納而非誰欲遮掩了誰。





#### Scope

Singapore has been experiencing a residential condominium development boom in recent years and as a result, architects have been called upon to design a slew of temporary show gallery buildings to facilitate the display and sale of these developments.

Set in land-scarce Singapore, the sites for such temporary show galleries are usually extremely tight and small; in addition to strict rules from National Parks Board about retaining mature trees, implying that the show gallery building needs to weave amongst the trees, developer clients also prefer for the entire building programme to be fit into a single-storey building as it's more cost effective than a two-storey one.

Following the success of UOL Edge Gallery (for the development named Katong Regency), reputed developer UOL Group Limited commissioned MOD to design a second show gallery containing sales areas and 2 show flats for a 445-unit development targeted at the upper middle class strata in Thomson's residential estate.

#### Site Constraints and Context

The site is located slightly off the main thoroughfare of Upper Thomson Road, with a generous programme that needed to be fit into the tight site, and remain single-storey whilst retaining several mature trees on the site. The brief also called for the gallery building to be able to attract visitors and potential buyers travelling along Thomson Road, and yet preserve prime views of trees for the show units, in order to evoke a sense of calm nestled amongst the greenery.

#### Solution

The "portal-driven" design capitalizes on the characteristics of its unique site conditions and uses it to heighten the experience of show gallery and show flats.

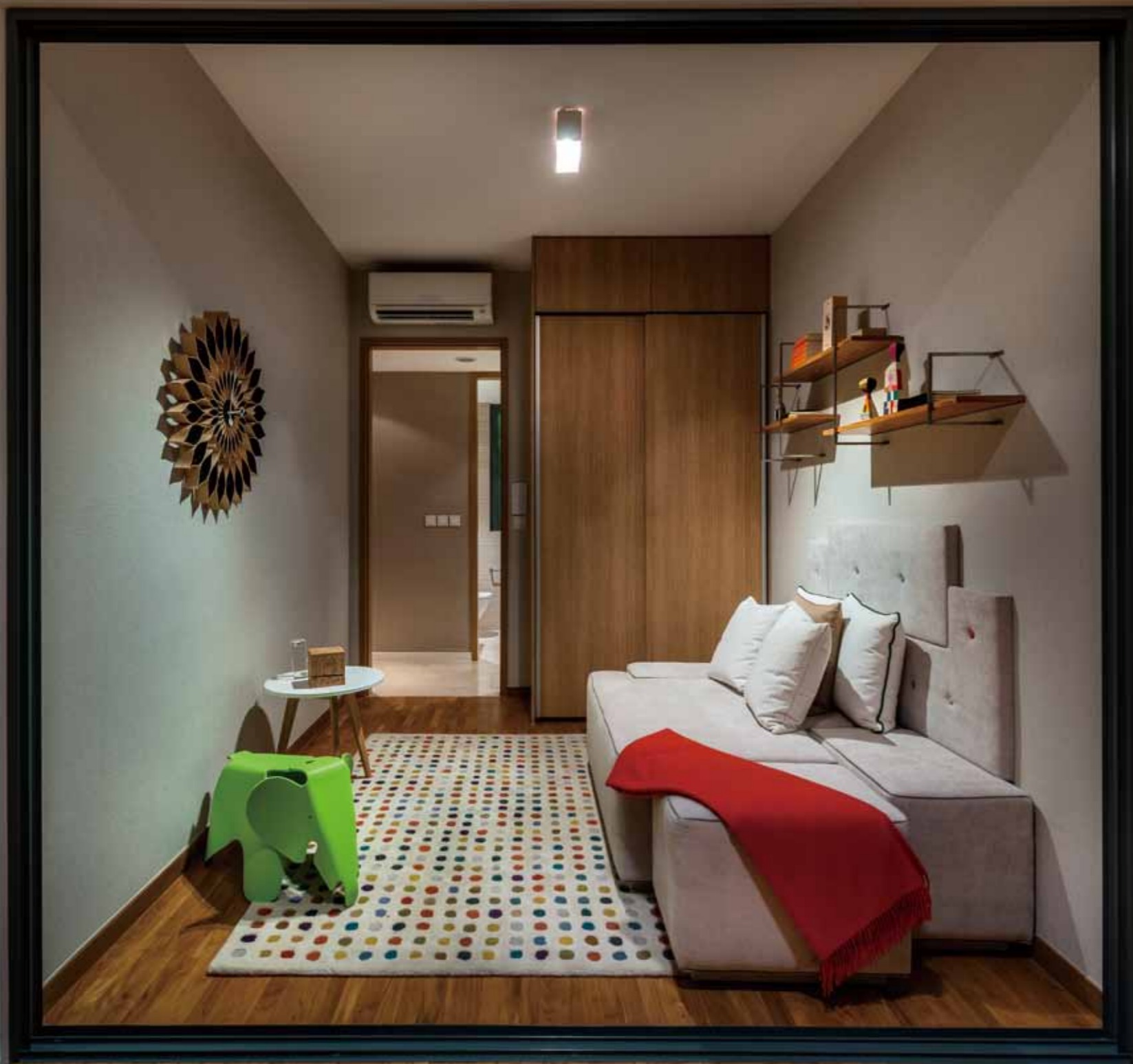
Nestled amongst a grove of tightly spaced trees and bounded by two roadways, the gallery is primarily arranged around a central model display atrium with a top-lit skylight, with 4 'pods' extending outwards from this central point. Each pod creates a portal view.

Two of the pods are orientated towards the main Thomson Road, where the large glass windows provide oncoming cars with an enticing view into the gallery's bustle and sales activity, hence serving as the show gallery's "window display" and a means to showcase the development models and graphics.

The two 'pods' on the opposite length of the gallery provide a completely different

experience and look out into a completely different view. Instead of the busy road, the view is of a 'jungle-like' natural setting filled with mature trees.

The design of the show gallery capitalizes on this and we placed the two show flats here, positioned intentionally to frame the attractive views beyond - creating a tranquil and serene domestic atmosphere to better situate the living environments of the show flats. Each show flat's design and interior attitude captures the lifestyle of a distinct demographic - a stylish younger feel for the 2-bedroom unit and a more mature sophisticated attitude for the 3-bedroom unit.

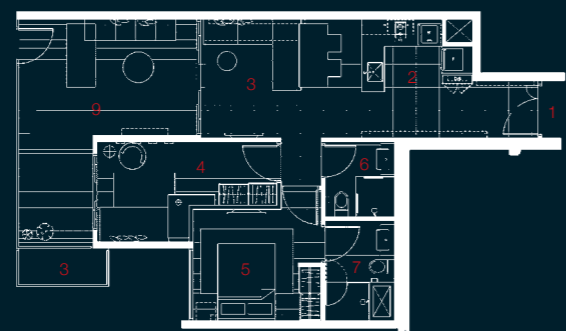


06

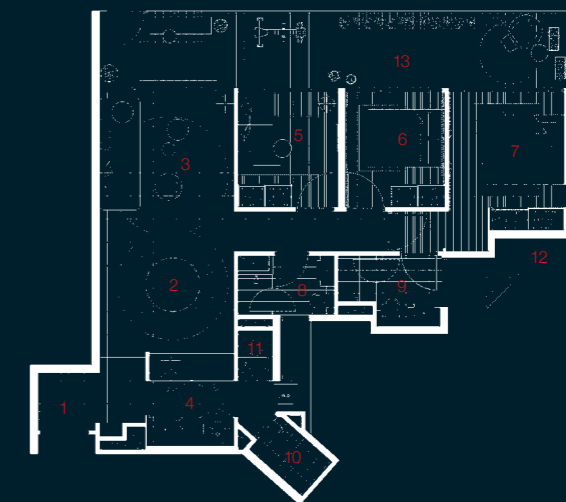


07

06 對準年輕客群品味的樣品屋，格局共2居室。  
07 皆以現代簡約風格為基調，搭配設計感物件或成熟精緻的經典單品，以區別客群。



- 2 BEDROOM UNIT
1. UNIT ENTRANCE
  2. KITCHEN
  3. LIVING / DINING AREA
  4. BEDROOM 1
  5. MASTER BATHROOM
  8. A / C LEDGE
  9. PES



- 3 BEDROOM UNIT
1. UNIT ENTRANCE
  2. DINING AREA
  3. LIVING AREA
  4. KITCHEN
  5. BEDROOM 1
  6. BEDROOM 2
  7. MASTER BATHROOM
  8. COMMON BATHROOM
  9. MASTER BATHROOM
  10. UTILITY
  11. WC
  12. A / C LEDGE
  13. PES